

Hôtel de la Poste



— MCE HÔTEL DE LA POSTE —

NEW VENUE

MEETING CONFERENCES & EVENTS



Cinema on the 3th floor of Hôtel de la Poste

TOUR & TAXIS DEVELOPMENT

It is Extensa's vision to develop the Tour & Taxis site into an inclusive living environment.

Tour & Taxis will offer a unique and balanced combination of diverse housing accommodations, next-generation workspace, state-of-the-art conference and seminar venues, complementary retail, leisure facilities, , and publicly accessible open space.

The site is to become an inspiring destination for creative and innovative individuals and businesses. In the redevelopment process, Extensa gives a modern interpretation to the historic buildings on the Tour & Taxis site, with great respect for their authenticity and architectural heritage value.



WELCOME TO MCE, MEETING CONFERENCES & EVENTS

Hosting over 40,000 meetings and events since being founded, MCE Conference & Business Centre is one of the largest meeting centres in the heart of Brussels. With a dedicated Conference & Business Centre team, we know how to make your event a real success.

With 11 different and modular meeting rooms and a cinema, MCE can meet your specific needs. All the rooms are modular and independently air conditioned. Standard equipment includes modern audio-visual equipment, flipcharts and wireless internet access.

«When you need to run a meeting it can be very stressful – there are so many details to think about and you have to work with lots of different suppliers too. So you really need to ensure the meeting runs smoothly and everyone attending the meeting or conference is happy and gets a professional feeling»

MCE has focussed on providing this excellent customer service. We have great rooms, great equipment, great location but it is the customer service that makes all the difference when you are organizing a meeting or conference)



Practical info



ROOMS' SETUP AND EQUIPMENT

With 11 different and modular meeting rooms and a cinema, MCE can meet your specific needs.

All the rooms are modular and independently air conditioned. Standard equipment includes modern audio-visual equipment, flipcharts and wireless internet access.



LOCATED IN THE HEART OF BRUSSELS

MCE is located at Tour & Taxis in Hôtel de la Poste.

Tour & Taxis is a multipurpose venue with restaurants, shops, wellness, park etc.

A stunning part of the city with a mix of heritage and new architecture.



REAL DAYLIGHT

All MCE rooms have natural daylight creating a comfortable & productive environment for all your meetings or events.



COFFEE LOUNGES

The open coffee lounge areas (salon) is a great place to have a quick meeting, grab a coffee or can be used as a cocktail area during an exhibition.



LUNCH BREAKS

At noon your attendees have their lunch break in the magnificent Lounge @ Royal Depot.

The fresh and healthy lunch will be accompanied by all in service.



FREE WIFI

We know how important it is to stay in contact with your business and family during your stay at MCE, so we offer a free fast WiFi connection. It is available to all attendees throughout the whole centre.



PARTNER SUPPLIERS

Are you looking for hostesses to welcome your attendees?

An interpreting team and equipment for your conference?

Contact us for more information: info@mceconferencecentre.eu



EASY ACCESS & MOBILITY

Located nearby the North station of Brussels and connected by the shuttle, tram and metro.



PARKING

Parking spaces are available on Tour & Taxis for you and your attendees.



TERRACE (between Paris - Nicosia)

You can have access to the terrace on the 2nd floor for your networking cocktails and refreshment breaks.



Lounge @ Royal Depot/ Lunch break location.

SUPPORT

Supporting our clients by providing excellent and personalized customer service – we are there for you!

PERSONAL

Being there for the clients, by providing a personal contact with the dedicated MCE team – they get to know the MCE team personally – you have the phone number and details of your contact and you can call them

FLEXIBLE & RESPONSIVE

Being flexible, responsive and capable of dealing with last minute changes and requests – last minute requests happen and we want to make sure your event is a success, we know how important it is for you...

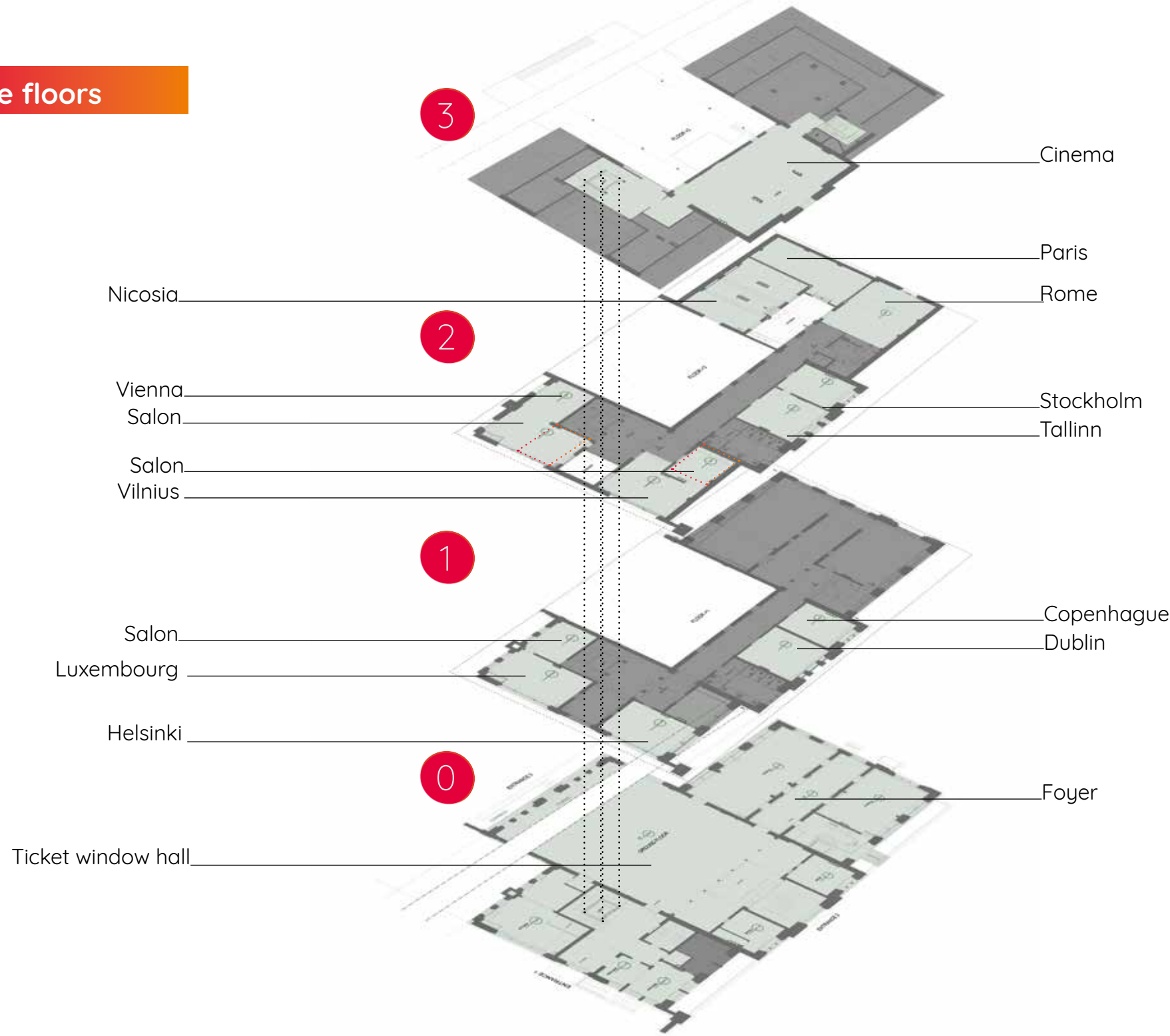
RELIEVING STRESS

Taking away the stress from the clients by managing the process and the suppliers for them (MCE has managed lighting, sound, catering etc, for the clients) – we have organized more than 40,000 events – we know how to do it so let us help you

MEMORABLE

Clients have a memorable and very positive experience with MCE @ Hôtel de la Poste.

The floors



	Surface		Theatre Style		U Shape		Cabaret Style		Classroom
Third floor									
Cinema	198 m²		65	—	—	—	—	—	—
Second floor									
Vienna	4,4 x 12 m	53 m²	32	—	16	12	26		
Salon	6 x 4,5 m	27 m²	—	—	—	—	—		
Vilnius	6 x 8 m	48 m²	60	—	28	30	36		
Salon	5,5 x 4 m	22 m²	—	—	—	—	—		
Tallinn	6 x 8 m	48 m²	40	—	18	14	28		
Stockholm	6 x 6 m	36 m²	30	—	16	12	18		
Rome	8 x 13m	96 m²	85	—	36	40	60		
Paris	12 x 6 m	72 m²	60	—	26	30	60		
Nicosia	8 x 14 m	112 m²	60	—	26	30	50		
First floor									
Salon	4 x 7 m	28 m²	—	—	—	—	—		
Luxembourg	9 x 6 m	55 m²	65	—	22	24	34		
Helsinki	7 x 6 m	42 m²	32	—	12	14	21		
Dublin	7 x 8 m	56 m²	32	24	16	12	24		
Copenhagen	6 x 6 m	36 m²	24	18	16	12	18		
Groundfloor									
Ticket window hall	41,40 x 20 m	800 m²	600	400	300	200	250		
Amsterdam	7 x 20 m	140 m²	140		30	47	140		
Berlin	7 x 12 m	84 m²	50		21	28	42		



Plan ground floor



CONFIGURATIONS & CAPACITY

	Surface		Theatre Style		U Shape		Cabaret Style		Classroom
Groundfloor									
Ticket window hall	41,40 x 20 m	800 m²	600	400	300	200	250		
Amsterdam	7 x 20 m	140 m²	140	30	47	140			
Berlin	7 x 12 m	84 m²	50	21	28	42			

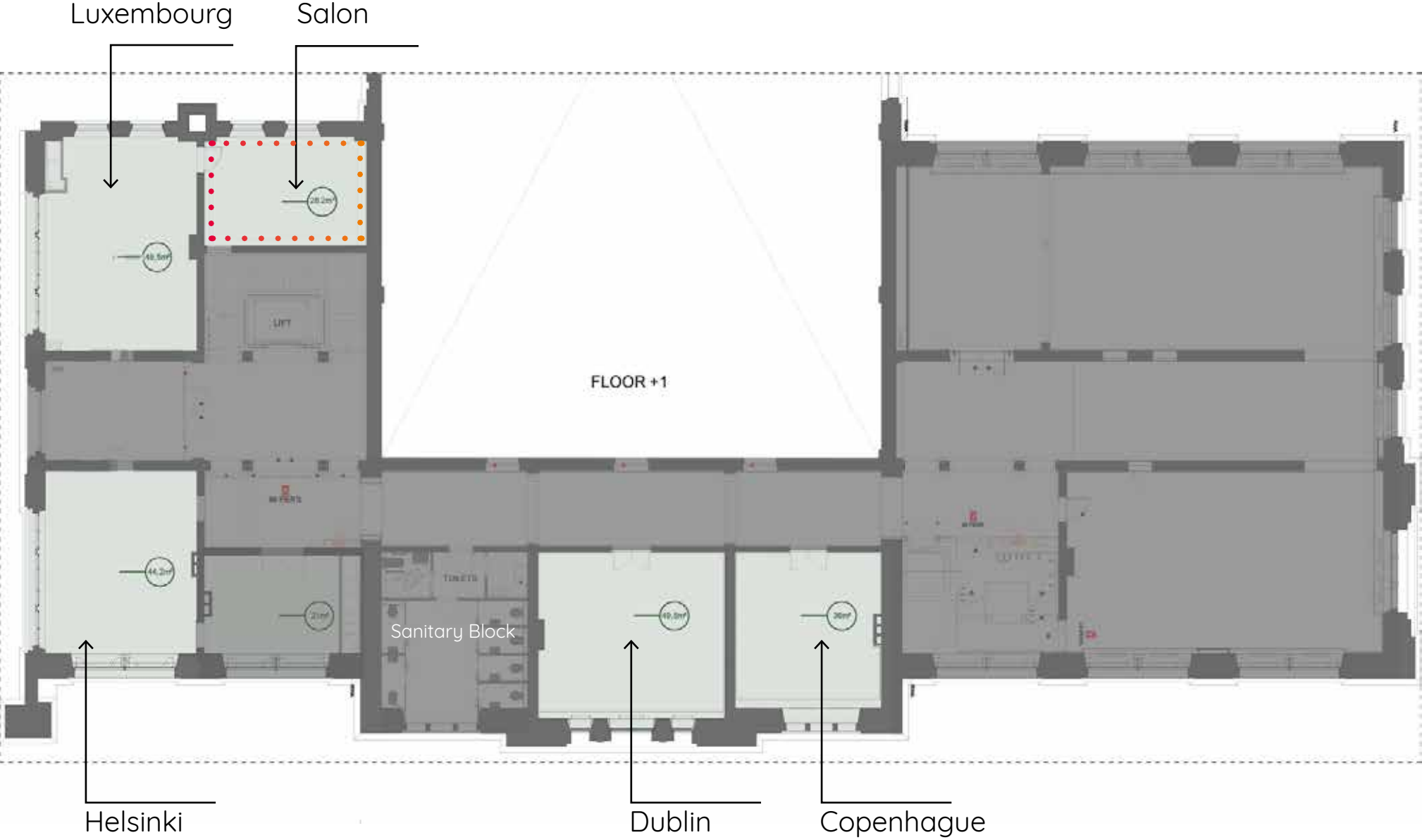
The historic ticket window hall is approximately 800m² and can host up to 600 guests.

This majestic ticket window hall can be used for several purposes: meetings, product launch, concerts, weddings etc. Next it you can find the 300m² «Foyer» where a coffee break or a lunch can take place during your event.




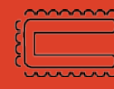

[Click here](#)
to make your reservation



Plan 1st floor



CONFIGURATIONS & CAPACITY

	Surface		Theatre Style		U Shape		Cabaret Style		Classroom
									
First floor									
Salon	4 x 7 m	28 m ²	—	—	—	—	—	—	—
Luxembourg	9 x 6 m	55 m ²	65	—	22	—	24	—	34
Helsinki	7 x 6 m	42 m ²	32	—	12	—	14	—	21
Dublin	7 x 8 m	56 m ²	32	24	16	—	12	—	24
Copenhagen	6 x 6 m	36 m ²	24	18	16	—	12	—	18

[Click here](#)
to make your reservation

MOODBOARD

Luxembourg
Function: polyvalent room
9m x 6m

Salon
Function: Salon meeting room
4m x 7m



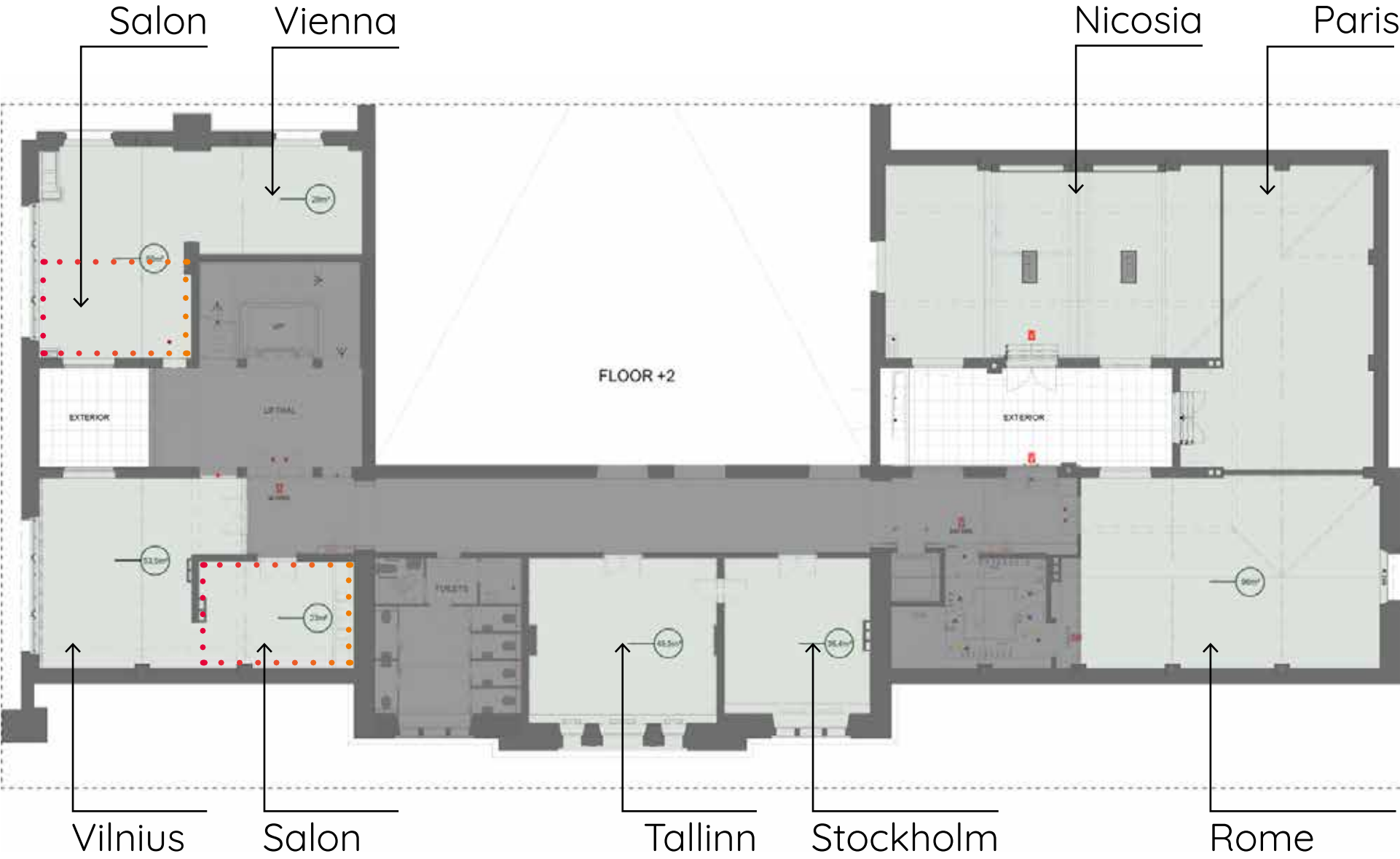
Helsinki
Wintergarden
Function: polyvalent
7m x 6m

Dublin
Function: boardroom
7m x 8m







Copenhagen
Function: boardroom
6m x 6m

WOODBOARD

Plan 2nd floor



CONFIGURATIONS & CAPACITY

	Surface		Theatre Style		U Shape		Cabaret Style		Classroom		
											
Second floor											
Vienna	4,4 x 12 m	53 m ²	32	—	16		12		26		
Salon	6 x 4,5 m	27 m ²	—	—	—		—		—		
Vilnius	6 x 8 m	48 m ²	60	—	28		30		36		
Salon	5,5 x 4 m	22 m ²	—	—	—		—		—		
Tallinn	6 x 8 m	48 m ²	40	—	18		14		28		
Stockholm	6 x 6 m	36 m ²	30	—	16		12		18		
Rome	8 x 13m	96 m ²	85	—	36		40		60		
Paris	12 x 6 m	72 m ²	60	—	26		30		60		
Nicosia	8 x 14 m	112 m ²	60	—	26		30		50		

[Click here](#)
to make your reservation

Exterior

- Vienna & Salon**
Function: Salon & meeting room
4m x 7m
- Vilnius & Salon**
Function: Salon & polyvalent room
9m x 6m
- Tallinn**
Function: polyvalent
6m x 8m



- Stockholm**
Function: polyvalent
6m x 6m
- Nicosia**
Function: polyvalent
8m x 14m
- Paris**
Function: polyvalent
12m x 6m
- Rome**
Function: polyvalent
8m x 13m

Plan 3rd floor



CONFIGURATIONS & CAPACITY

	Surface	Theatre Style	U Shape	Cabaret Style	Classroom
Third floor					
Cinema	198 m ²	65	—	—	—





Deloitte, Alde Group, MC Kinsey, European research council, Vlerick Alumni, EU selectie



PUBLIC TRANSPORT

- BY BUS

STIB-MIVB

Stop Tour & Taxis

Lines 14, 20, 57

Stop Picard

Line 89

De Lijn

Stop Saintelette (7 minutes walk)

Line 356
- BY TRAM

Stop North Station

Lines 3 and 4

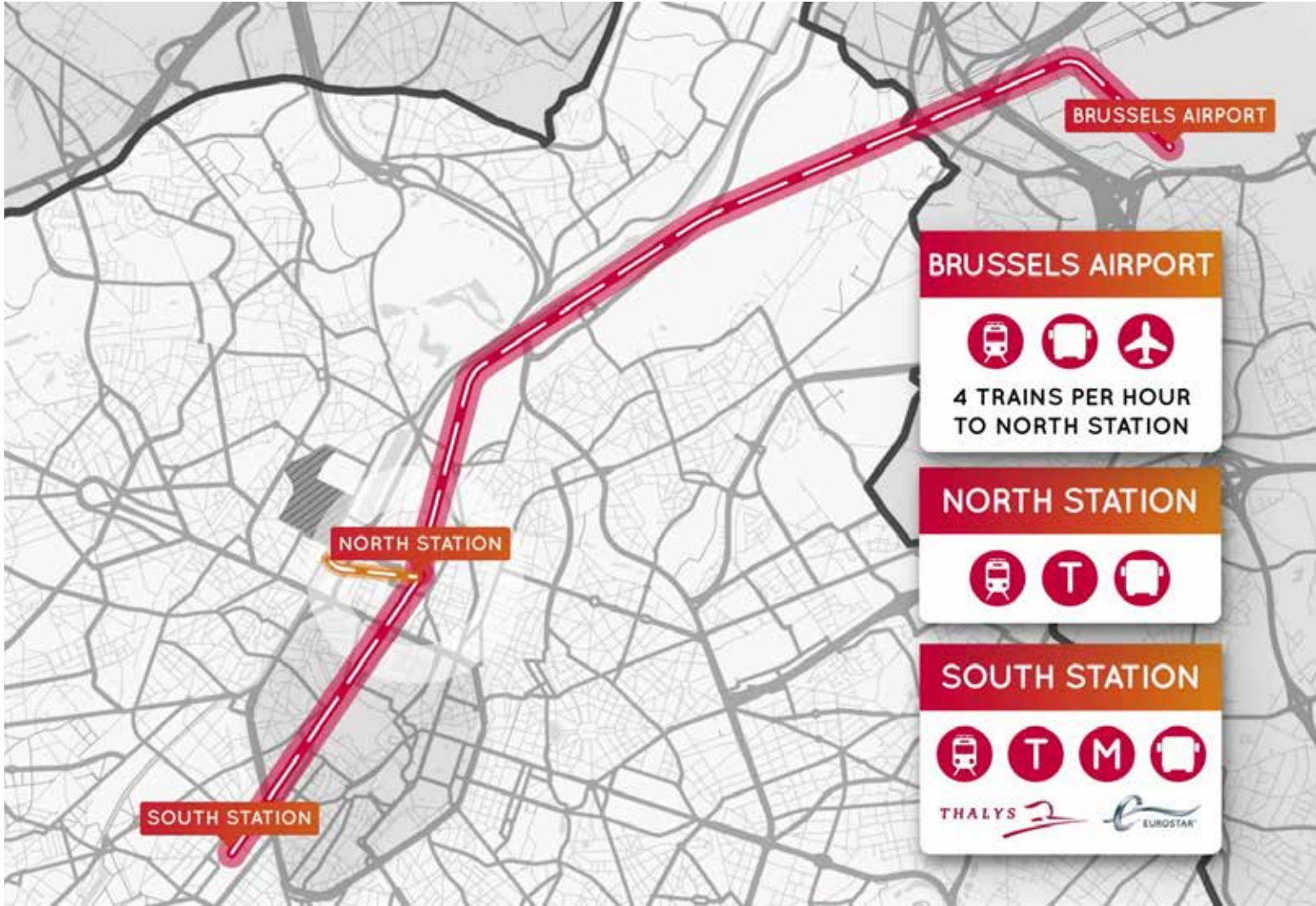
Stop Saintelette (7 minutes walk)

Line 51
- BY METRO

Stops Yser/Ijzer or Ribaucourt

Lines 2 and 6 (10 minutes walk)
- BY TRAIN

Stop North Station (15 minutes walk)

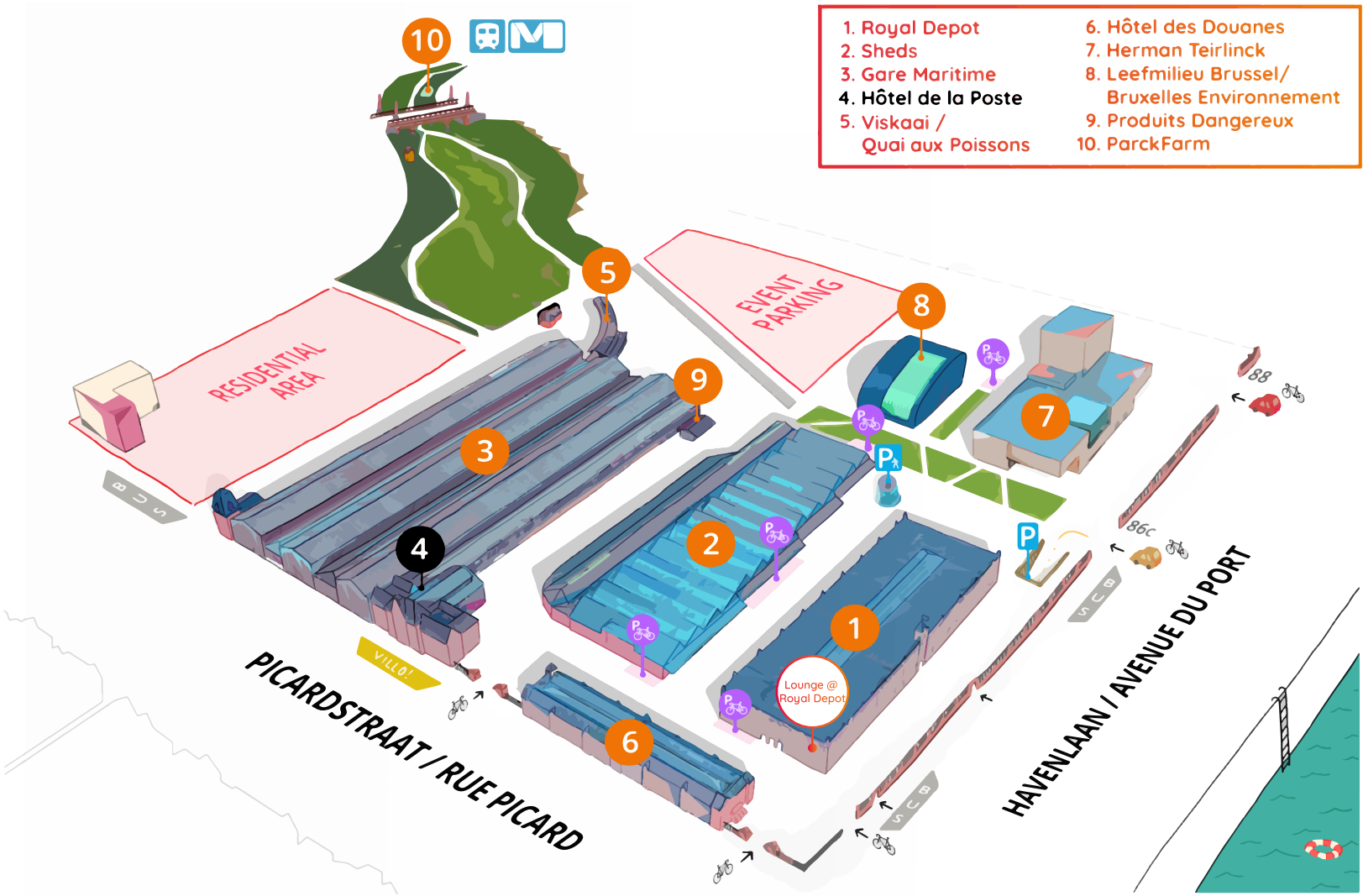


USE OF CAR PARK

- EVENT DURING THE WEEK BEFORE 6 PM

Events taking place during the week before 6 pm can use the Parking entrance of Avenue du Port/Havenlaan 88, 1000 Brussels. 6 €/car/day (incl.vat).
- EVENT DURING THE WEEK AFTER 6 PM / WEEKEND

Events taking place during the week after 6 pm or during the weekend can use the Parking entrance of Avenue du Port/Havenlaan 86C, 1000 Brussels. 7 €/car/day (incl.vat).



—MCE CONFERENCE AND BUSINESS CENTRE —

BECOMES MCE @ HÔTEL DE LA POSTE

MEETINGS CONFERENCES EVENTS

MCE Hôtel de la Poste

Contact us

+32 (0)2 543 21 40

info@mceconferencecentre.eu



Tour & Taxis

Avenue du Port Havenlaan 86C Bus 316

1000 Brussel, Belgium

www.tour-taxis.com

TOUR & TAXIS
YOU, TOMORROW

Other venues @ Tour & Taxis

Produits Dangereux

www.hotel-de-la-poste.be

www.sheds.brussels

Lounge @ Royal Depot